



# **“Reinventing The State’s Forestry Sector and Conservation Initiatives For Impactful Benefits To The Society”**

**WEBINAR KEBANGSAAN SEMPENA HARI BIODIVERSITI ANTARABANGSA 2020**

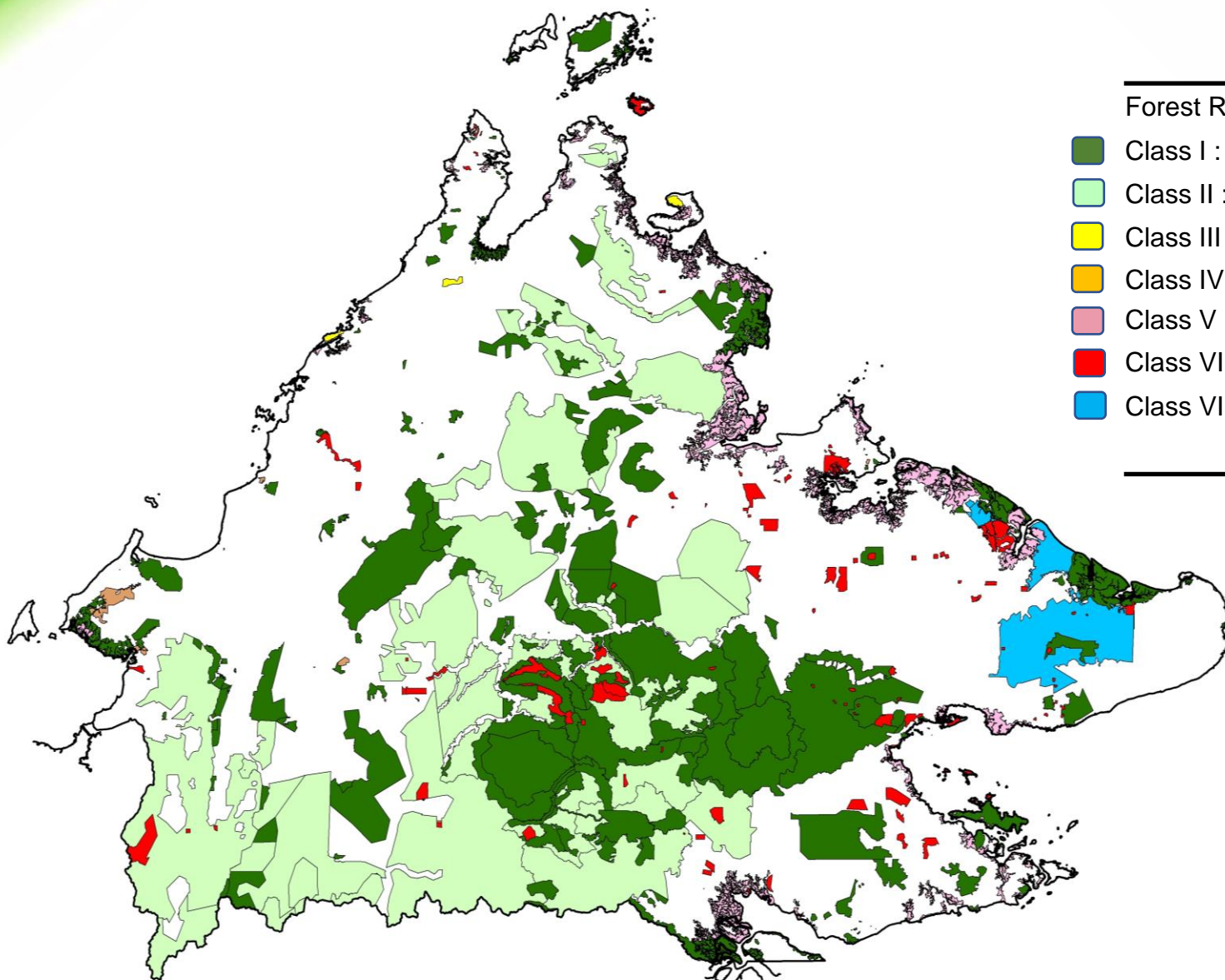
**Sabah Forestry Department**

**21<sup>st</sup> May 2020**



# FOREST RESERVES AND PROTECTED AREAS

# FOREST RESERVES

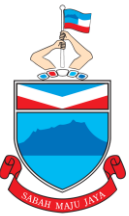


Forest Reserve Class	Area (Ha)	Percentage
Class I : Protection Forest Reserves	1,386,995.26	39.2%
Class II : Commercial Forest Reserve	1,659,896.95	46.9%
Class III : Domestic Forest Reserve	4,656.00	0.1%
Class IV : Amenity Forest Reserve	11,388.45	0.3%
Class V : Mangrove Forest Reserve	231,778.27	6.5%
Class VI : Virgin Jungle Reserve	107,047.90	3.0%
Class VII : Wildlife Forest Reserve	139,502.85	4.0%
Total	3,541,265.68	100%

Source: Sabah Forestry Department 2019

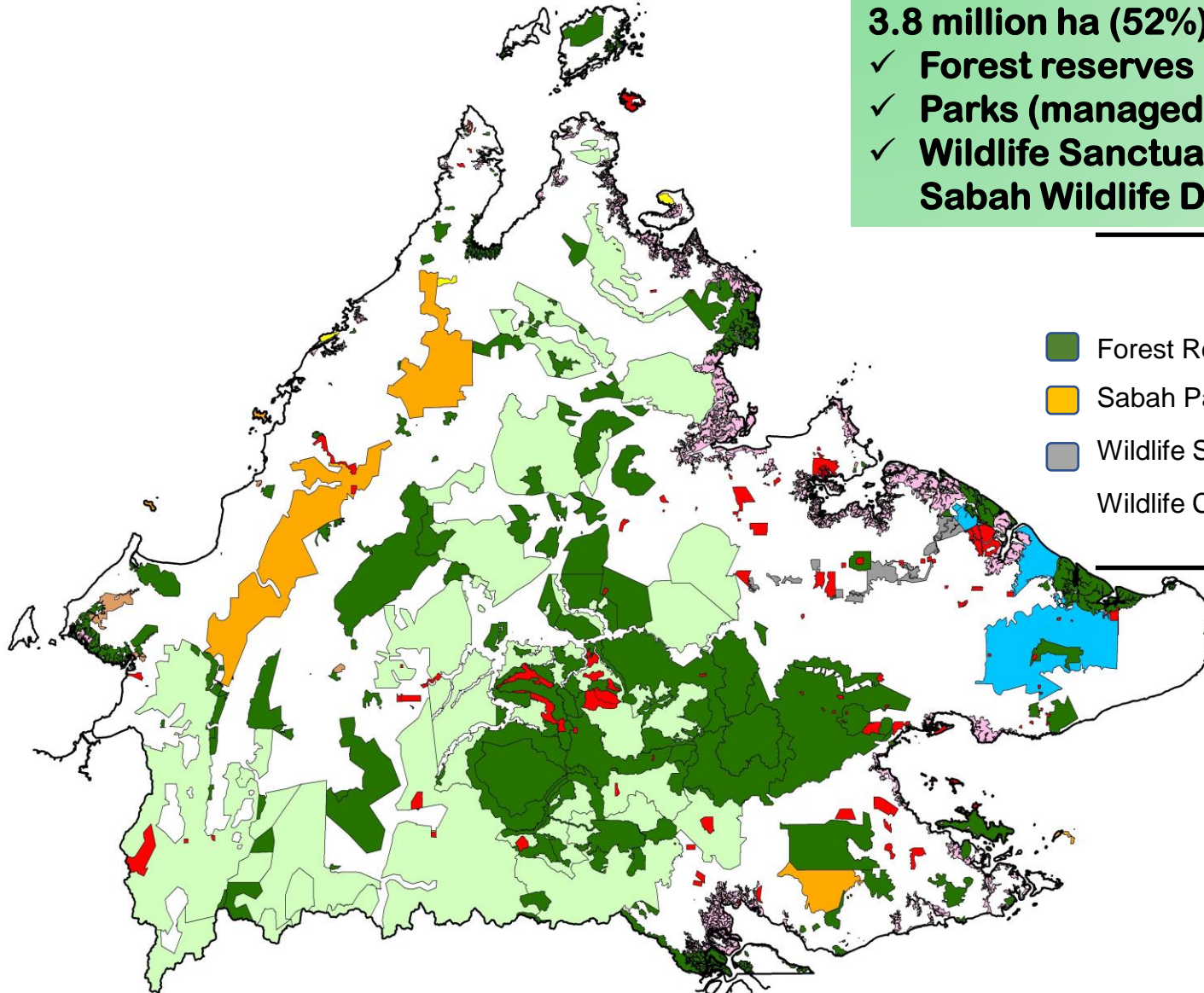
**3.5 million ha (48%)  
7 classes of forest reserve**

# FOREST RESERVES AND OTHER PROTECTED LANDS



**3.8 million ha (52%) include**

- ✓ **Forest reserves (managed by Sabah Forestry Department)**
- ✓ **Parks (managed by Sabah Parks)**
- ✓ **Wildlife Sanctuary & Wildlife Conservation Area (managed by Sabah Wildlife Department)**



Type	Area in hectare	Percentage
Forest Reserves (Class I – VII)	3,541,265.68	92.8%
Sabah Parks	245,172.00	6.4%
Wildlife Sanctuary	26,103.00	0.7%
Wildlife Conservation Area	2,854.00	0.1%
<b>Total</b>	<b>3,815,394.68</b>	<b>100.0%</b>

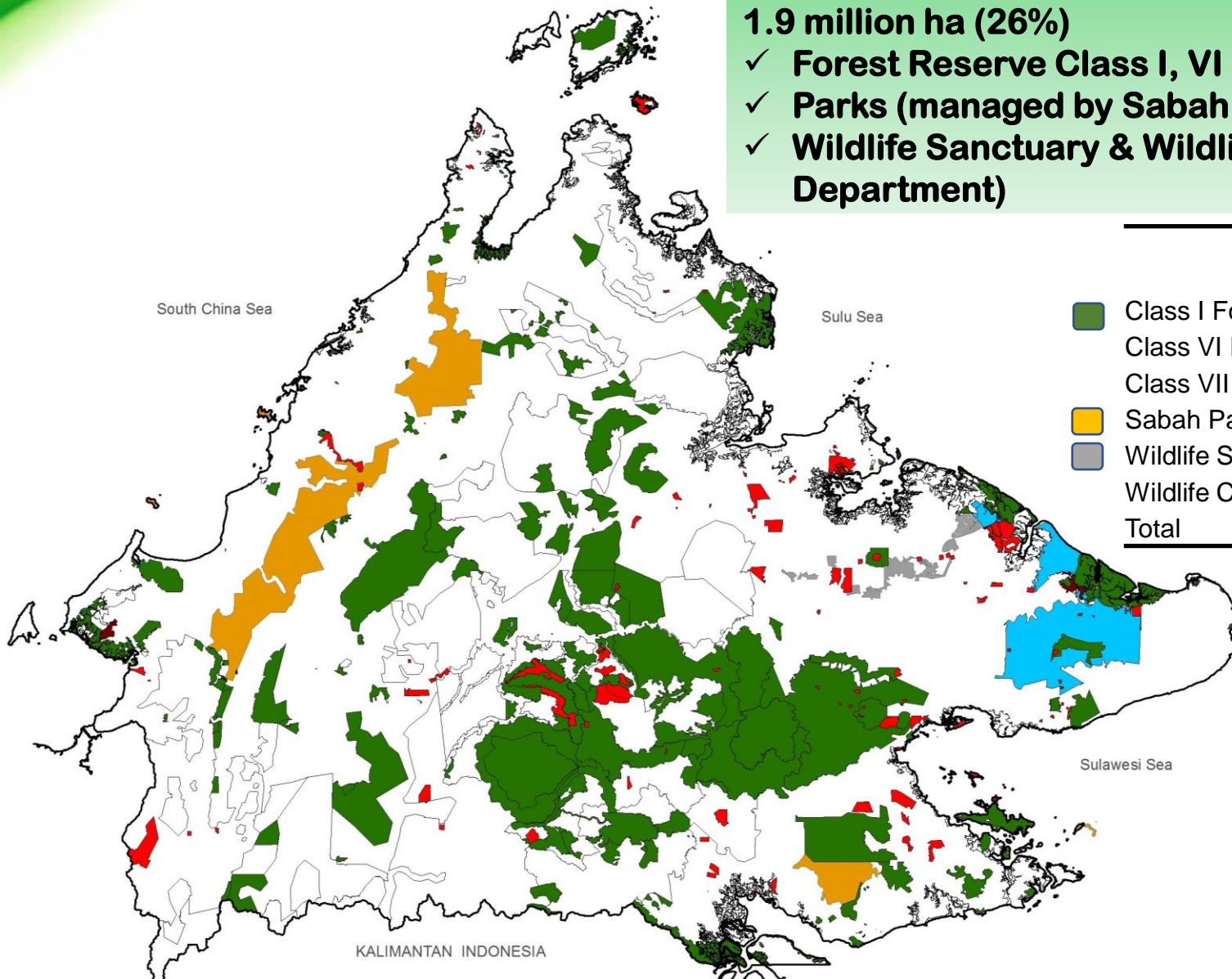
Source: Sabah Forestry Department 2019

# TOTALLY PROTECTED AREAS (TPAs)



**1.9 million ha (26%)**

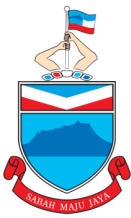
- ✓ **Forest Reserve Class I, VI & VII (managed by Sabah Forestry Department)**
- ✓ **Parks (managed by Sabah Parks)**
- ✓ **Wildlife Sanctuary & Wildlife Conservation Area (managed by Sabah Wildlife Department)**



Type	Area in Hectare	Percentage
Class I Forest Reserve	1,386,995.26	18.84
Class VI Forest Reserve	107,047.903	1.45
Class VII Forest Reserve	139,502.85	1.89
Sabah Parks	245,172.00	3.33
Wildlife Sanctuary	26,103.00	0.36
Wildlife Conservation Area	2,854.00	0.04
<b>Total</b>	<b>1,907,675.013</b>	<b>25.91</b>

Source: Sabah Forestry Department 2019

# COMMITMENT ON FOREST CONSERVATION



- Sabah Forest Policy 2018 : To have not less than 30% of Sabah's land area under Totally Protected Area by 2025

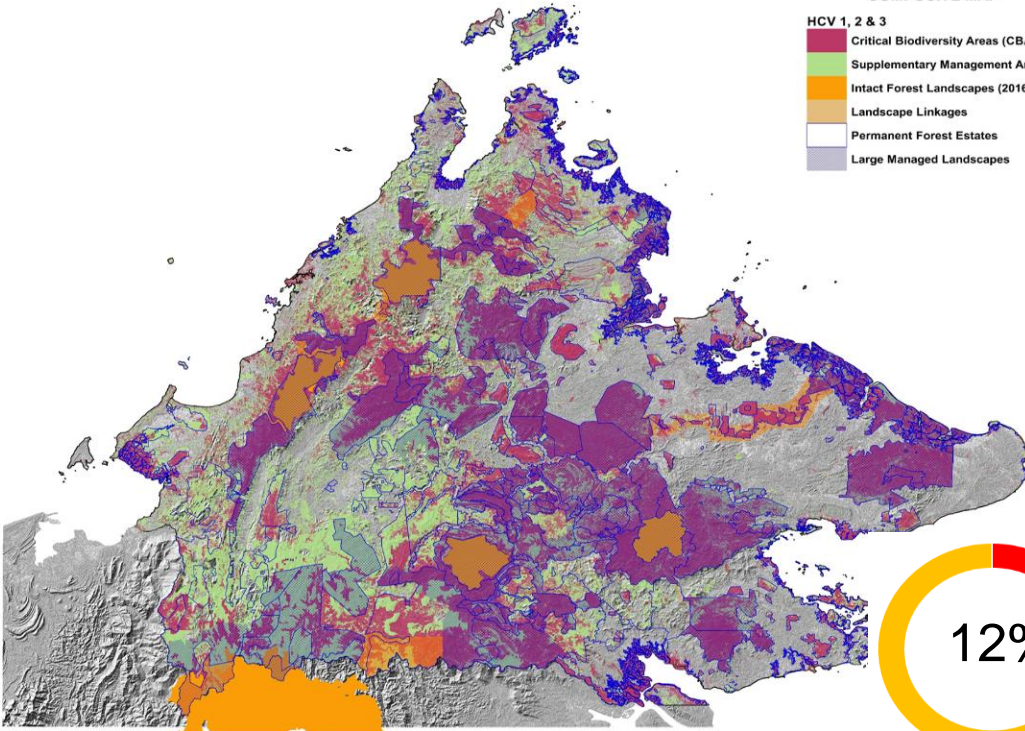
Sabah's goal to achieve 30% of TPAs leading the nation in achieving the AICHI TARGETS

*Sabah Biodiversity Strategy (2012 – 2022) : Goal No. 3 All of our ecosystems, species and genetic diversity are protected and well managed”.*

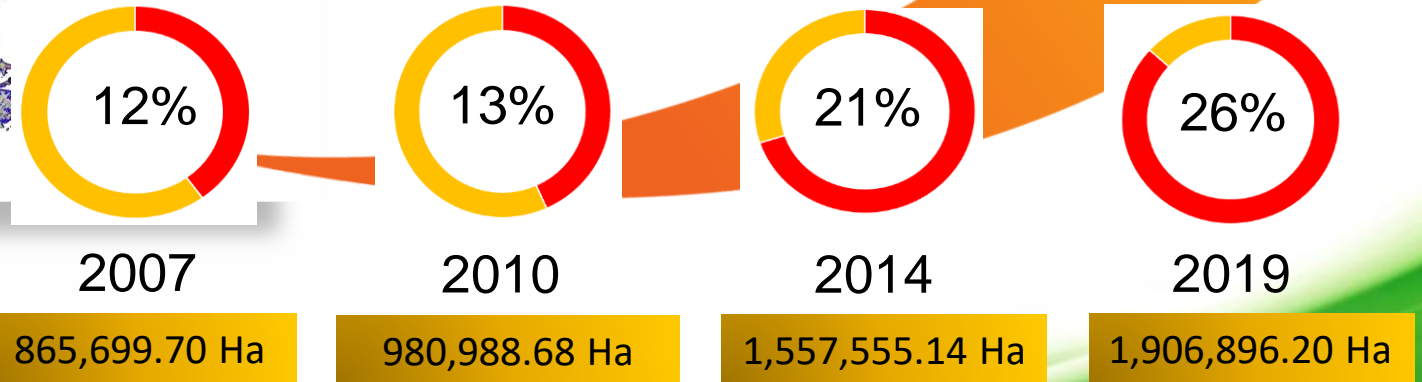
BIODIVERSITY, LANDSCAPES AND ECOSYSTEMS COMPOSITE MAP

HCV 1, 2 & 3

- Critical Biodiversity Areas (CBA)
- Supplementary Management Areas
- Intact Forest Landscapes (2016)
- Landscape Linkages
- Permanent Forest Estates
- Large Managed Landscapes



2.2 million Ha  
**TARGET BY 2025**



Source: FRC, Sabah Forestry Department 2019



# KEY CONSERVATION INITIATIVES

# KEY CONSERVATION INITIATIVES



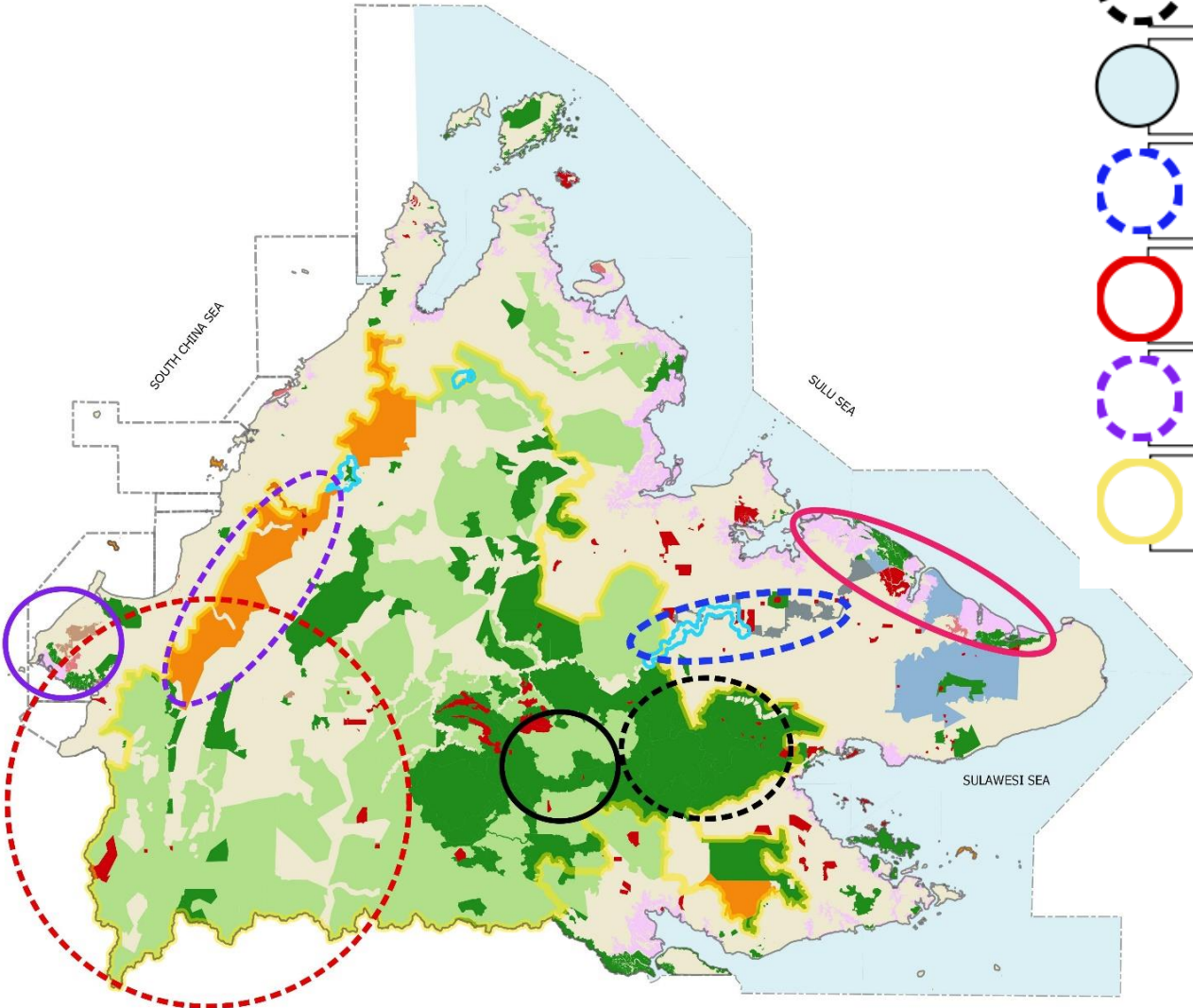
Sabah EU-REDD+

Sabah Jurisdictional Certified Sustainable Palm Oil (Sabah JCSP0) Initiative

Biodiversity Conservation in Multiple-use Forest Landscapes in Sabah.  
 - Community PES Readiness Building Capacity for Piloting for Ecosystem Services in Babagon

GEF-7 FOOD Systems, Land Use and Restoration (FOLUR) Impact Program entitled: Integrated Landscape Management of Heart of Borneo Landscapes in Sabah and Sarawak

Sustainable Management of Petland Ecosystems in Malaysia (International Fund for Agriculture Development (IFAD/GEF)): Klias Area



The Ulu Segama-Malua SFM Project (241,098 ha)

Sulu Sulawesi Marine Ecoregion & Coral Triangle

Kinabatangan Corridor of Life (26,103 Ha)

RAMSAR Lower Kinabatangan Wetlands Sanctuary (78,000)

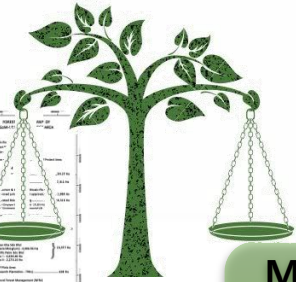
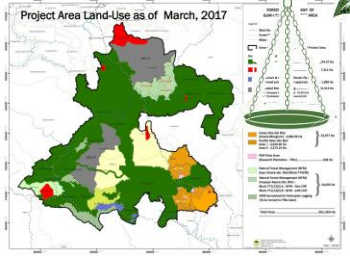
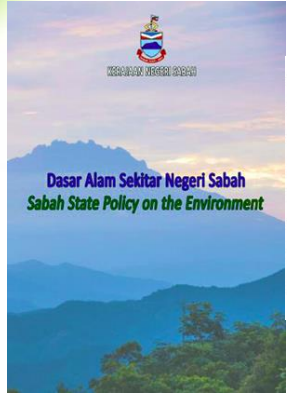
Crocker Range Biosphere Reserves (350,584 ha)

The Heart of Borneo (HoB) Initiative (3.9 million ha)

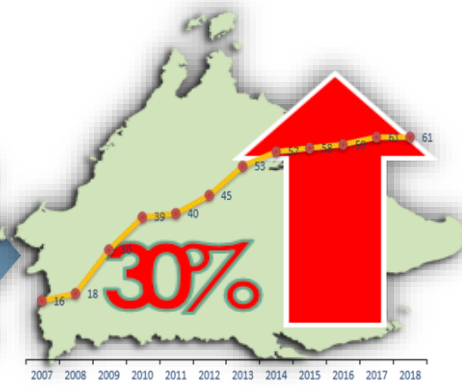


# CONSERVATION – WAY FORWARD

# CONSERVATION APPROACH



**HIGH  
CONSERVATION  
VALUE**



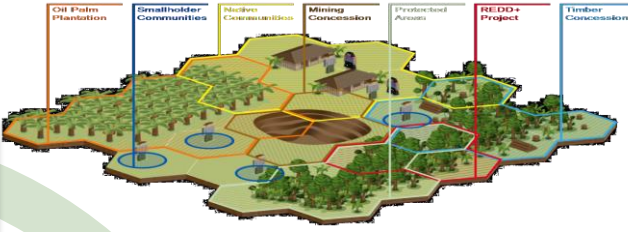
**Managed Retention  
towards No Net Loss  
(NNL)/Net Gain**

**State-wide FMPs,  
TPAs, HCVs, OECMs,  
Green List & CCAs**

**Sustainable Alternatives  
Community Livelihood  
Development**



**Rationalization  
of Land Use**



**PES, REDD+ &  
Conservation  
Finance**



**Mainstreaming  
Conservation in  
other Sectors**





# Thank you



**Call / Fax  
us:**

**Tel: (6-089) 242500**

**Fax: (6-089) 671303**



**Email  
us:**

**E-mail : [htan@sabah.gov.my](mailto:htan@sabah.gov.my)**



**Follow  
us:**

**Website: <http://www.forest.sabah.gov.my>**

**<https://www.facebook.com/sabahforestrydepartment>**