

# ASEAN

# *Wildlife*

— Threatened Plant Species of ASEAN —



# Threatened Species of ASEAN

ASEAN is home to diverse species of plants and animals. These species contribute to the various ecological services humans use on a daily basis. Amidst this diversity, the region is at constant threat of species loss from a myriad of factors such as habitat loss, overexploitation, and land use conversion, among others.

To raise awareness on the importance of these species, the ASEAN Centre for Biodiversity features some of the Threatened Plant Species in the ASEAN. These species are categorized under the International Union of Conservation of Nature's (IUCN) Red List as either Vulnerable, Endangered, or Critically Endangered. The IUCN Red List follows a set of criteria in classifying species at high risk of global extinction. The criteria include (1) reduction of population size of the species, (2) geographic range in the form of species' area of occupancy and extent of occurrence, (3) declining population of species' mature individuals, and (4) quantitative analysis showing the probability of species' extinction in the wild is at least 50 per cent within 10 years or three generations, whichever is longer.

A Vulnerable species exhibits high risk of extinction in the wild unless the reasons that are threatening its survival and reproduction improve. An Endangered species on the other hand faces a very high risk of extinction in the wild and very likely to become extinct. A Critically Endangered species faces an extremely high risk of extinction in the wild. These categories compose the cluster of Threatened Species under the schema of IUCN red list.

Source:

IUCN. (2012). *IUCN Red List Categories and Criteria: Version 3.1*. Second edition. Gland, Switzerland and Cambridge, UK: IUCN. iv + 32pp



# Dipterocarpus cornutus Dyer

Threat Status/Year Published

**CR 1998**

## Local names

**Cambodia:** *dau*

**Indonesia:** *keruing, keruing gajah*

**Malaysia:** *keruing*

**Myanmar:** *eng, in, kanyin*

**Philippines:** *basilan, bagac, panau, hagakhak, apitong*

**Thailand:** *yang*

**Viet Nam:** *dau*

## Habitat



Can be found on ridges with well drained sandy soils in undisturbed mixed dipterocarp forests with altitudes of up to 1,000 meters.

## Uses



The timber is harvested for commercial use.

## Distribution



Indonesia (Kalimantan, Sumatera); Malaysia (Peninsular Malaysia); Singapore



© Gabriella Frederikson & Graham Usher

## Threats



Habitat loss due to forest conversion

### Sources

[http://asianplant.net/Dipterocarpaceae/Dipterocarpus\\_cornutus.htm](http://asianplant.net/Dipterocarpaceae/Dipterocarpus_cornutus.htm)  
<http://www.iucnredlist.org/details/33072/0>  
<http://www.tropicaltimber.info/specie/keruing-dipterocarpus-cornutus/>  
<https://www.mybis.gov.my/sp/8052>



© Muhammed Izzuddin Hazan  
<https://www.mybis.gov.my/>



© Yao, T.L.  
<https://www.mybis.gov.my/>



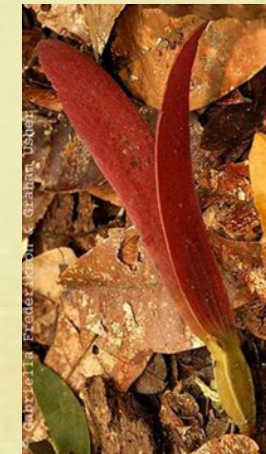
© Angela Hijas



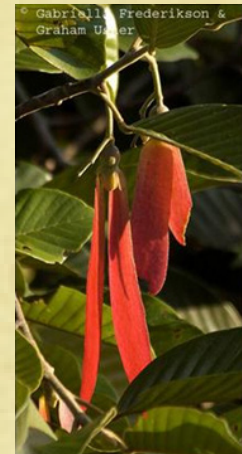
© Perry Slik



© Muhammed Izzuddin Hazan  
<https://www.mybis.gov.my/>



© Gabriella Frederikson & Graham Usher



© Gabriella Frederikson & Graham Usher

# Dipterocarpus tempehes Slooten

Threat Status/Year Published

**CR 1998**

Common names

Indonesia: keruing, tempehes

Habitat



Can be found growing on clay to sandy soils, mostly on alluvial sites and along rivers (rarely on hillsides) of undisturbed mixed dipterocarp forests with altitude of up to 400 meters

Uses



Timber is commercially harvested.

Threats



Habitat loss

Distribution

Indonesia (Kalimantan)



Sources

- [http://asianplant.net/Dipterocarpaceae/Dipterocarpus\\_tempehes.htm](http://asianplant.net/Dipterocarpaceae/Dipterocarpus_tempehes.htm)
- <http://www.iucnredlist.org/details/33378/0>
- <https://florafaunaweb.nparks.gov.sg/special-pages/plant-detail.aspx?id=3964>
- <http://www.natureloveyou.sg/Dipterocarpus%20tempehes/Main.html>
- <http://www.chm.frim.gov.my/Bio-Diversity-Databases/Gallery.aspx?Flora&page=251>



NParks Flora&FaunaWeb



© www.NatureLoveYou.sg



© www.NatureLoveYou.sg



© Joseph Lee



NParks Flora&FaunaWeb



LILLIAN CHUA



NParks Flora&FaunaWeb

# Dipterocarpus sublamellatus Foxw.

Threat Status/Year Published

**EN 1998**

Common names

Indonesia, Malaysia, Singapore: *keruing kerut*

Habitat



Can be found in slopes and low hills to 500 meters. Locally common, especially in moist places

Uses



Used for timber

Threats



Overexploitation for timber

Distribution



Indonesia (Sumatera); Malaysia (Peninsular Malaysia, Sarawak); Singapore



Sources

[http://asianplant.net/Dipterocarpaceae/Dipterocarpus\\_sublamellatus.htm](http://asianplant.net/Dipterocarpaceae/Dipterocarpus_sublamellatus.htm)

<http://www.iucnredlist.org/details/31759/0>

<https://florafaunaweb.nparks.gov.sg/Special-Pages/plant-detail.aspx?id=3963>



NParks Flora & Fauna Web



NParks Flora & Fauna Web



(c)Clayton Lee@Singapore



(c)Clayton Lee@Singapore



NParks Flora & Fauna Web



(c)Clayton Lee@Singapore

# Dipterocarpus hasseltii Bl.

## Threat Status/Year Published

**EN 2017**

## Common names

**Indonesia:** *keruing bunga* (general), *jempinang* (Java), *keruing tampudan* (Kalimantan)

**Malaysia:** *keruing ropol*, *keruing laut* (Peninsular), *keruing kerukup kechil* (Sabah)

**Philippines:** Hasselt's panau, Palawan panau, highland panau (general)

**Thailand:** *yang-kliang*, *yang-tai* (general), *yang-man-sai* (peninsular)

**Viet Nam:** *dầu rái*

## Habitat



Lowland dipterocarp forests on well-drained but moist fertile red soils in valleys and on hillsides, sometimes on calcareous soil, even limestone (Java); sometimes gregarious; to elevation of 600 meters

## Sources

[http://asianplant.net/Dipterocarpaceae/Dipterocarpus\\_hasseltii.htm](http://asianplant.net/Dipterocarpaceae/Dipterocarpus_hasseltii.htm)  
<http://www.iucnredlist.org/details/31313/0>  
[https://uses.plantnet-project.org/en/Dipterocarpus\\_hasseltii\\_\(PROSEA\)](https://uses.plantnet-project.org/en/Dipterocarpus_hasseltii_(PROSEA))

## Distribution

Indonesia (Jawa, Kalimantan, Sumatera); Lao People's Democratic Republic; Malaysia (Peninsular Malaysia, Sabah, Sarawak); Myanmar; Philippines; Thailand; Viet Nam



## Uses



The timber is harvested for commercial use.

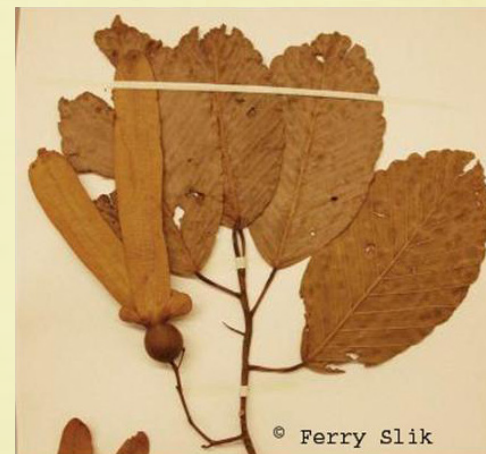
## Threats



Agricultural expansion resulting to habitat loss and overexploitation for timber



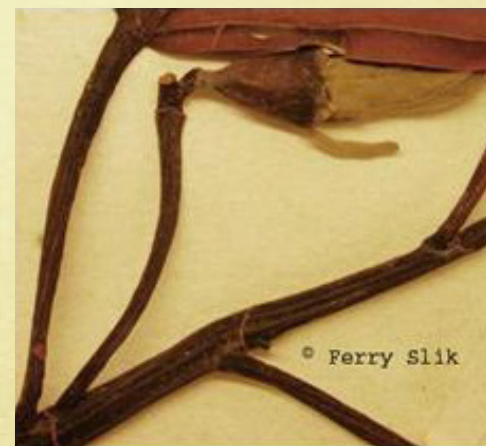
Copyright © 2011 by Leonardo L. Co



© Ferry Slik



© Ferry Slik



© Ferry Slik



© Ferry Slik



WENDY YONG SZE YEE



Copyright © 2011 by Leonardo L. Co

# Aquilaria beccariana van Tiegh.

Threat Status/Year Published

**VU 1998**

## Common names

**Indonesia:** *garu tanduk* (Kalimantan), *mengkaras putih* (Sumatra)

**Malaysia:** *gaharu*, *gumbil*, *njabak*

## Habitat



On sandy to clay soils, often along rivers, streams, and on ridges.

In undisturbed mixed dipterocarp, keranga and sub-montane forests up to 1,000 meters altitude

## Uses



The fungi-infected wood is used to produce a valuable incense (*gaharu*). The fungi-infected heartwood, characteristic of all members of the genus, has high commercial value for making incense, perfume and traditional medicine.

Numerous trees are cut down, many of which are uninfected, to harvest just a few kilograms of the diseased wood. The increase in levels of trade over the past decade has resulted in overexploitation throughout its range.

## Distribution



Brunei Darussalam; Indonesia (Kalimantan, Sumatera); Malaysia (Peninsular Malaysia, Sabah, Sarawak)



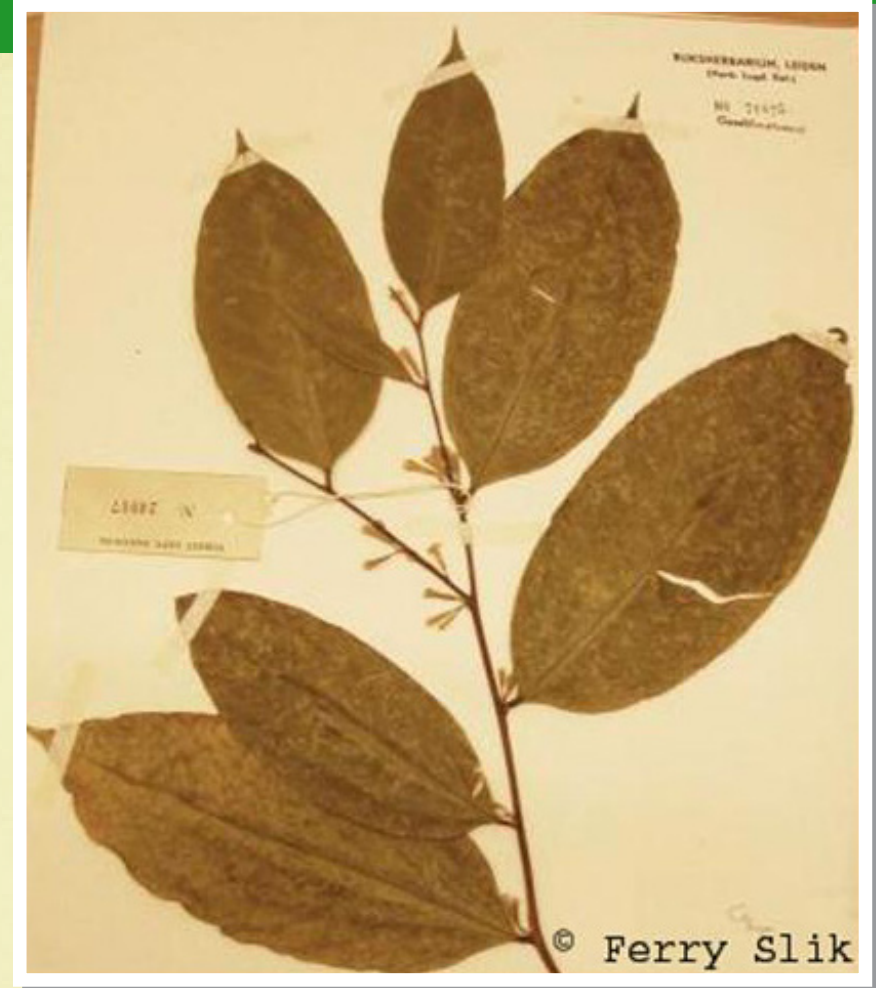
## Threats



Overharvesting of agarwood for commercial purposes and habitat loss due to deforestation.

## Sources

[http://asianplant.net/Thymelaeaceae/Aquilaria\\_beccariana.htm](http://asianplant.net/Thymelaeaceae/Aquilaria_beccariana.htm)  
<http://www.iucnredlist.org/details/38067/0>  
[https://uses.plantnet-project.org/en/Aquilaria\\_beccariana\\_\(PROSEA\)](https://uses.plantnet-project.org/en/Aquilaria_beccariana_(PROSEA))  
<http://gaharu84.blogspot.com/2013/05/buah-gaharu-aquilaria-beccariana-atau.html>  
<http://ww2.odu.edu/~lmusselm/plant/index.php?todo=details&id=13937>



# Canarium pseudodecumanum Hochr.

Threat Status/Year Published

**VU 1998**

## Common names

**Indonesia:** *tandikat* (eastern central Sumatra), *damar likat* (Aceh), *jelapat gala-gala semut* (Kalimantan)

**Malaysia:** *kedondong kemasul*, *damar kangar* (Peninsular), *pomatodon* (Sabah)

**Thailand:** *han* (Songkhla)

## Habitat



Can be found in undisturbed forests with altitude of up to 300 meters

## Uses



Its wood is very soft, and the abundant resin is used for caulking canoes. An edible oil is pressed out of the seeds, which also are eaten.

## Distribution



Indonesia (Kalimantan, Sumatera);  
Malaysia (Peninsular Malaysia, Sabah);  
Thailand



## Threats



Overexploitation of the species for its commercial uses (resin and edible oil)

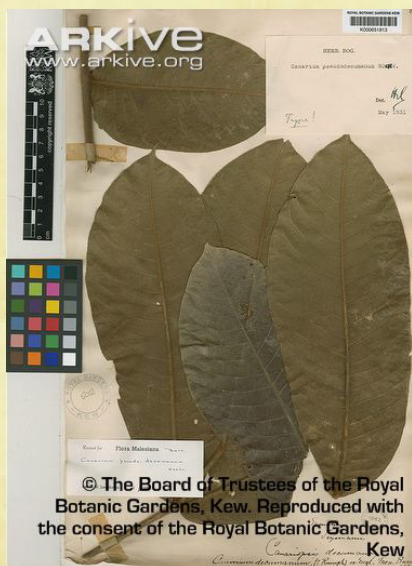
## Sources

[http://asianplant.net/Bursaceae/Canarium\\_pseudodecumanum.htm](http://asianplant.net/Bursaceae/Canarium_pseudodecumanum.htm)

<http://www.iucnredlist.org/details/32175/0>

[https://uses.plantnet-project.org/en/Canarium\\_pseudodecumanum\\_\(PROSEA\)](https://uses.plantnet-project.org/en/Canarium_pseudodecumanum_(PROSEA))

<https://proof.arkive.org/canarium/canarium-pseudodecumanum/image-G128678.html>



# Dipterocarpus crinitus Dyer

Threat Status/Year Published

**VU 2017**

## Common names

**Brunei Darussalam:** *keruing (m)empelas*

**Indonesia:** *keruing bulu* (Sumatra, Kalimantan), *amperok* (East Kalimantan), *mara keluang* (Sumatra)

**Malaysia:** *keruing (m)empelas* (general)

**Thailand:** *yang-khai* (peninsular)

## Habitat



Widespread on undulating land and low hills, rarely to 850 meters, on leached clay-rich soils in mixed dipterocarp forest

## Uses



The timber is harvested for commercial use.

## Threats



Habitat loss as a consequence of the expansion of agriculture and is further threatened by exploitation of the species for its timber and oleoresins

## Sources

[http://asianplant.net/Dipterocarpaceae/Dipterocarpus\\_crinitus.htm](http://asianplant.net/Dipterocarpaceae/Dipterocarpus_crinitus.htm)

<http://www.iucnredlist.org/details/33476/0>

[https://uses.plantnet-project.org/en/Dipterocarpus\\_crinitus\\_\(PROSEA\)](https://uses.plantnet-project.org/en/Dipterocarpus_crinitus_(PROSEA))

<https://www.mybis.gov.my/sp/6024>

## Distribution



Indonesia (Kalimantan, Sumatera);  
Malaysia (Peninsular Malaysia, Sabah, Sarawak); Thailand

